



2026/2027

WELCOME BOOK



THE
SUSTAINABLE
DESIGN
SCHOOL

www.besignschool.com



Table of Content

04

Student life at BESIGN

Campus, access, facilities and daily life.

08

Academic Organization

Program structure, schedule and pedagogy.

12

Academic Excellence & Support

Accreditations, partnerships, well-being and inclusion.

14

Supplies & Materials

Required equipment and reading references.

16

Preparing your arrival in France

Accommodation, insurance, banking and essential documents.

19

Student visa procedure

Campus France, France-Visas and validation steps.

Welcome to BESIGN

Dear Students,

The entire team at BESIGN School is delighted to welcome you.

Choosing to study in France is a meaningful decision that reflects your ambition, curiosity, and openness to the world. By joining BESIGN, you become part of an international community committed to building a more sustainable future through design, innovation, and responsible leadership.

At BESIGN, we believe that design has the power to transform society. In response to today's environmental and social challenges, we will support you in developing your creative and technical skills while fostering critical thinking, a strong sense of responsibility, and the ability to create positive impact.

Understanding that moving to a new country can be both exciting and challenging, we have designed this Welcome Book to guide you through the essential steps and help you settle in smoothly.

Please know that you will not be alone on this journey. Our team is fully committed to supporting you before your arrival and throughout your academic experience. Your success, well-being, and personal growth are at the heart of our mission.

We look forward to welcoming you to campus and discovering the talent, diversity, and perspectives you will bring to our community.

Welcome to France.

Welcome to BESIGN.

Welcome to a community committed to shaping a sustainable future.



The Campus



Located in Cagnes-sur-Mer, just 10 minutes walking distance from the Mediterranean Sea and 10 minutes driving from Nice International Airport, BESIGN offers a dynamic and inspiring environment. As a human-sized institution, BESIGN ensures that each student receives individual attention and guidance. The atmosphere is both professional and supportive, fostering autonomy while maintaining strong academic supervision.

Human-sized institution



The campus extends over more than 2000 square meters dedicated entirely to creativity and experimentation.

- Design studios
- Computer lab
- Soft lab
- Workshop & FabLab
- Photo studio
- Creativity room
- Terraces
- Presentation hall
- Relaxation area
- Lunch room

2000 m² dedicated to creativity and student life !

Access to the school

The campus is secured by an entry code system. Official opening hours are from 8:30 AM to 6:00 PM, with classes taking place between 9:00 AM and 12:00 PM, and from 1:30 PM to 4:30 PM. Staff members are present throughout opening hours to ensure supervision and support.

1 CHEMIN DU VAL FLEURI
06800 CAGNES-SUR-MER
FRENCH RIVIERA - FRANCE

BY PLANE

Nice Côte d'Azur International
Airport - 10 minutes

BY BUS

Stop: Val Fleuri (in front of the
school)
Lines: 9 · 620 · 650 · 637

BY TRAIN

Stop: Cros de Cagnes
5 minute walk

BY BIKE

Bike station n°317
Secure bike storage available at
school



Students who need to commute by train are encouraged to subscribe to the annual ZOU! Études train pass (approx. €90 per year). This pass allows unlimited travel between home and school and offers up to 75% discount on other regional train journeys.

Local bus and tram services are operated by Lignes d'Azur. Routes, schedules and tickets are available via the official mobile application : <https://www.lignesdazur.com/>



Cagnes-sur-Mer is located in the Provence-Alpes-Côte d'Azur region, one of the most attractive and dynamic areas in Europe. The city extends along nearly four kilometres of Mediterranean coastline and enjoys a mild climate throughout the year. The sea is only ten minutes from campus, offering a unique living environment where academic intensity meets natural beauty.

The region combines beaches, hills and mountains within short distance. Local ski resorts are accessible in winter, while the Mediterranean offers numerous water activities during warmer months. Students are encouraged to explore nearby cities such as Nice, Cannes, Monaco and Antibes, as well as the Verdon Gorge and the Mercantour National Park. The French Riviera is not only a place to study, but also a place to experience culture and nature at their finest.

Location



France is internationally recognized for its cultural richness, artistic heritage and creative industries. It has long been a centre of intellectual thought, innovation and aesthetic excellence.

The **BESIGN** team



Sandrine LEBAS

Academic Director
sandrine.lebas@besignschool.com
+33 (0)7 80 42 62 27



Maurille LARIVIERE

President & Director
maurille.lariviere@besignschool.com
+33 (0)4 93 97 11 59



Inken KREVET

Head of International Development
inken.krevet@besignschool.com
+34 615788216



Aurélie CLOITRE

Academic Manager
aurelie.cloitre@besignschool.com
+33 (0)4 93 97 11 59



Amandine JUGLARET

Administration Manager
amandine.juglaret@besignschool.com
+33 (0)4 93 97 11 59



Thomas PREVOST

Head of Innovation & Operations
thomas.prevost@besignschool.com
+33 (0)4 93 97 11 59



Elodie DA COSTA

Head of Development
elodie.da-costa@besignschool.com
+33 (0)6 14 91 23 69



Paul GRAC

Communication officer
paul.grac@besignschool.com
+33 (0)4 93 97 11 59

The weekly calendar

B1

	monday	tuesday	wednesday	thursday	friday
week A	Language 2D-Adobe Suite	design studio 1-2	Drawing Level 1-2	Sustainable Design History & Culture 1 Sustainability Principles 1	free day
week B	Graphic Comp. & Typography		Sustainability Principles 2 3D Intro to Rhino	partnership project	Prototyping & Modelmaking 1-2
bootcamp week Guest designers (masterclass), visiting professors, advanced skills or expertise topics					

B2

	monday	tuesday	wednesday	thursday	friday
week A	Language Creative Thinking	design studio 2-3	Drawing Level 3 Electives 1	Sustainable Design History & Culture 2 Sustainability Principles 3	free day
week B	free day		Advanced 3D Digital Visualization & Intro to AI	partnership project	
bootcamp week Guest designers (masterclass), visiting professors, advanced skills or expertise topics					

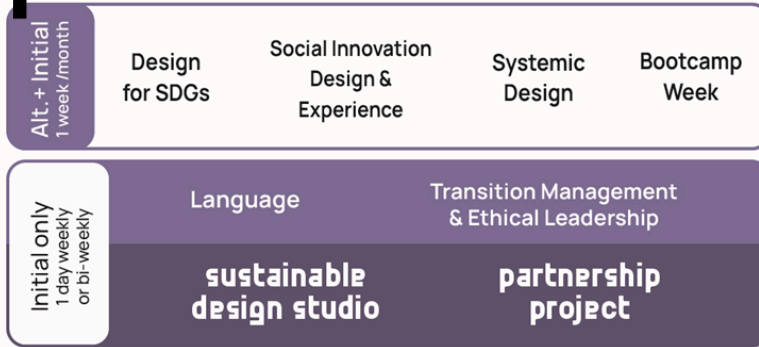
B3

	monday	tuesday	wednesday	thursday	friday
week A	Language Personal ID & Portfolio Intro to Arduino	major design studio	Sustainability Principles 4	User Research for Design Impact Systemic Mapping Life Centered Design	free day
week B	Trends & Stories		Electives 2 & 3	partnership project	
bootcamp week Guest designers (masterclass), visiting professors, advanced skills or expertise topics					

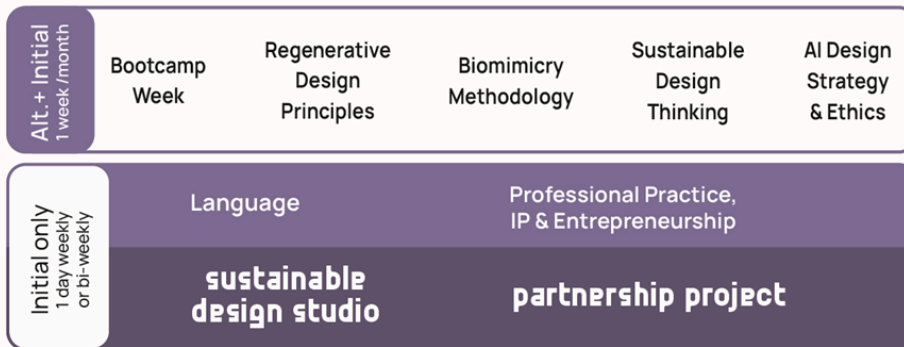
The weekly calendar

M1

semester 1 -october to january-



semester 2 -february to june-



M2

semester 3 -september to december-



semester 4 -january to april-

-may to october-



The weekly calendar

UPgrade year

S1

week A	2D-Adobe Suite	design studio 1	Drawing Level 1	Sustainable Design History & Culture 1	free day	
	OR		OR	OR		
	Creative Thinking		Drawing Level 3	User Research for Design Impact		
OR						
week B	Language	design studio 3	Sustainability Principles 1	partnership	Prototyping & Mock-up 1	
			OR			
			Advanced 3D			

S2

	monday	tuesday	wednesday	thursday	friday	
week A	Language	design studio 2	Drawing Level 2	Sustainability Principles 2	free day	
	Graphic Comp. & Typography		OR	OR		
			Intro Elective	Sustainable Design History & Culture 2		
OR						
week B		design studio 4	3D-Intro to Rhino	partnership	Prototyping & Mock-up 2	
	Graphic Comp. & Typography		OR			
			Digital Visualization & Intro to AI			
OR						
bootcamp week						
Guest designers (masterclass), visiting professors, advanced skills or expertise topics						

Academic calendar 26/27

September	October	November	December	January
1 T 36	1 T	1 S 45	1 T	1 F Holiday
2 W	2 F	2 M A	2 W	2 S
3 T	3 S	3 T	3 T	3 S
4 F	4 S	4 W	4 F	4 M A 1
5 S	5 M B 41	5 T	5 S	5 T
6 S	6 T	6 F	6 S	6 W
7 M Upgrade	7 W KO	7 S	7 M B 50	7 T
8 T 37	8 T KO	8 S	8 T	8 F
9 W Class	9 F PART	9 M B 46	9 W	9 S
10 T	10 S	10 T	10 T	10 S
11 F	11 S	11 W Holiday	11 F	11 M B 2
12 S	12 M A 42	12 T	12 S	12 T
13 S	13 T	13 F	13 S	13 W
14 M Upgrade	14 W	14 S	14 M 51	14 T
15 T 38	15 T	15 S	15 T Bootcamp week	15 F
16 W Class	16 F	16 M A 47	16 W	16 S
17 T	17 S	17 T	17 T	17 S
18 F	18 S	18 W	18 F	18 M A 3
19 S	19 M B 43	19 T	19 S	19 T
20 S	20 T	20 F	20 S	20 W
21 M 39	21 W	21 S	21 M Holiday 52	21 T
22 T Back to school	22 T	22 S	22 T	22 F
23 W	23 F	23 M B 48	23 W	23 S
24 T	24 S	24 T	24 T	24 S
25 F	25 S	25 W	25 F	25 M B 4
26 S	26 M 44	26 T	26 S	26 T
27 S	27 T	27 F	27 S	27 W
28 M A	28 W	28 S	28 M 53	28 T
29 T	29 T	29 S	29 T	29 F
30 W	30 F	30 M A 49	30 W	30 S
	31 S		31 T	31 S

1st semester
 2nd semester
 Weekend
 Holidays
 Upgrade Class

February	March	April	Mai	June	July	August
1 M B 5	1 M B 9	1 T	1 S Holiday	1 T	1 T	1 S 31
2 T	2 T	2 F	2 S	2 W	2 F	2 M
3 W	3 W KO	3 S	3 M B 18	3 T	3 S	3 T
4 T Final Pres.	4 T KO	4 S	4 T	4 F	4 S	4 W
5 F	5 F PART	5 M A 14	5 W	5 S	5 M 27	5 T
6 S	6 T	6 T	6 T Holiday	6 S	6 T	6 F
7 S	7 S	7 W	7 F	7 M A 23	7 W	7 S
8 M 6	8 M A 10	8 T	8 S Holiday	8 T	8 T	8 S
9 T	9 T	9 F	9 S	9 W	9 F	9 M 32
10 W	10 W	10 S	10 M A 19	10 T	10 S	10 T
11 T	11 T	11 S	11 T	11 F	11 S	11 W
12 F	12 F	12 M B 15	12 W	12 S	12 M 28	12 T
13 S	13 S	13 T	13 T	13 S	13 T	13 F
14 S	14 S	14 W	14 F	14 M B 24	14 W Holiday	14 S
15 M 7	15 M B 11	15 T	15 S	15 T	15 T	15 S Holiday
16 T	16 T	16 F	16 S	16 W	16 F	16 M 33
17 W	17 W	17 S	17 M B Holiday 20	17 T	17 S	17 T
18 T	18 T	18 S	18 T	18 F Final Presentati on	18 S	18 W
19 F	19 F	19 M 16	19 W	19 S	19 M 29	19 T
20 S	20 S	20 T	20 T	20 S	20 T	20 F
21 S	21 S	21 W	21 F	21 M A 25	21 W	21 S
22 M A 8	22 M A 12	22 T	22 S	22 T	22 T	22 S
23 T	23 T	23 F	23 S	23 W	23 F	23 M 34
24 W Bootcamp Week	24 W	24 S	24 M A 21	24 T	24 S	24 T
25 T	25 T	25 S	25 T	25 F End school	25 S	25 W
26 F	26 F	26 M A 17	26 W	26 S	26 M 30	26 T
27 S	27 S	27 T	27 T	27 S	27 T	27 F
28 S	28 S	28 W	28 F	28 M 26	28 W	28 S
	29 M B Holiday 13	29 T DIPLOMA	29 S	29 T	29 T	29 S
	30 T	30 F	30 S	30 W	30 F	30 M
	31 W		31 M B 22	31 S	31 S	31 T

Academic Excellence, Inclusion & Student Support

At BESIGN The Sustainable Design School, academic excellence goes hand in hand with student well-being and inclusion.

BESIGN delivers a State-certified degree registered under the French RNCP framework, structured in ECTS credits and recognized across Europe, facilitating international mobility and academic equivalencies.

The school is also Qualiopi certified, a national quality label that guarantees the rigor of our pedagogical processes, student support systems, program structure, and continuous improvement approach.

As a member and co-founder of Université Côte d'Azur (UCA), a public experimental university bringing together universities, Grandes Écoles and research centers, BESIGN is part of a dynamic academic and scientific ecosystem of excellence.

Our pedagogy is built on "learning by doing" : project-based learning, experimentation and collaboration are at the heart of the student experience.



Through The Be-Lab, our creative and collaborative laboratory, students, alumni, designers and faculty work together to research, regenerate and innovate for a positive-impact design, closely connected to contemporary challenges and our local territory.

BESIGN is also actively engaged within key international and national design networks. As a member of Cumulus, the global association of leading art and design education institutions, the school benefits from a strong international academic network and exchange opportunities.

Through its collaboration with APCI (Agence pour la Promotion de la Création Industrielle), BESIGN contributes to promoting the strategic value of design within industry and society.

In addition, as part of France Design Éducation (FDE), the school is integrated into a national network of design institutions committed to advancing excellence, innovation and research in design education.

Student well-being is a priority.

BESIGN provides access to a free and confidential psychological support service throughout the academic year.

In addition, a dedicated Disability Advisor (Amandine Juglaret) supports students with specific needs to ensure equal opportunities and appropriate academic accommodations when required.



Academic rules

Students must inform Aurélie (aurelie.cloitre@besignschool.com) as soon as possible in the event of lateness or illness.

Students arriving more than 15 minutes late will be required to wait until the scheduled mid-class break before entering the classroom, in order to avoid disrupting the session.

In case of illness, students are granted up to 2.5 days per month of sick leave without the need for a medical certificate. Any absence exceeding this allowance must be justified with an official medical certificate.

Absence for family reasons requiring travel to the home country is permitted once per academic year. Supporting documentation may be requested. Parents or legal guardians are regularly informed of attendance through official absence reports issued by the school (only in the first year of the Bachelor program).

Assessment methods are communicated by each instructor at the beginning of the course.

Evaluation is generally based on continuous assessment and may include projects, assignments, presentations and coursework submissions. Students are expected to respect all deadlines and follow instructions carefully.

Timeliness, engagement and adherence to academic guidelines are key factors in the evaluation process.



Supplies list

For all students

- 1 computer/video projector connector
- 1 pack of Post-it notes
- White Blu Tack (Patafix)
- 1 tube of glue
- 1 ream of A4 paper and 1 ream of A3 paper
- 1 external hard drive and 1 USB key
- BIC pens
- 1 cutter, 1 X-Acto knife and scissors
- 1 metallic ruler (50 cm) with cutting edge

Design Studio, all levels

- 1 A4 sketchbook or notebook
- 1 ream of A4 paper (500 pages)
- 2-3 A4 folders or a drawing cardboard folio with elastic closure
- 5 BIC pens of your choice (yellow or crystal BIC)
- 1 medium-tip black felt pen
- Pantone felt pens (Cool Grey 1-3-5-7 + Warm Grey 1-3-5-7 + 1 black)
- 1 A2 cutting mat

Drawing – Level 1 & 2 (1st Year)

- 1 black felt pen (Stabilo Stylist)
- 1 “Sign Pen” Stabilo
- 1 A3 Layout paper pad (Scholarshammer or Canson)
- 1 roll of tracing paper for sketching (30g or 40g)
- 1 orange BIC pen with black carbide tip
- 3 or 4 coloring pencils (preferably Derwent Artist or brand of your choice) in different grey ranges
- Standard coloring pencils (school-quality pencils are sufficient)
- 1 Pentel black permanent marker
- 1 good-quality white pencil and 1 black pencil
- 40 sheets of paper, format raisin (50 × 65 cm)
- 1 full range of graphite pencils (from 4H to 6B)

Drawing – Level 3 (2nd Year)

- 3 primary colors in 15 ml tubes:
 - Yellow Pure N° 216
 - Red Magenta N° 352
 - Blue Phtalo N° 484
- 1 watercolor paper block 30 × 40 cm, fine grain (for example Etival-Clairefontaine, 300g)
- 1 plastic palette (ref 23159) with a large mixing space and round pans
- 2 medium-size brushes, mixed hair recommended (sable hair and synthetics)

Recommended references:

- DA VINCI COSMOTOP (set 5530, sable hair and synthetics), N° 8
- DA VINCI COSMOTOP (set 5530, sable hair and synthetics), N° 12

or

- AQUAFINE synthetic fiber round tip, Daler-Rowney N° 12 (ref. 80778)

Additional materials:

- Minimum 3 pieces of absorbent cloth (for example from an old bed sheet)
- 1 cup for water
- 1 grey pencil 3B
- 1 art eraser
- 1 Blackstone pencil 2B (or a black color pencil)



Supplies list

Prototyping - All Levels

- Protection masks type FFP3
- 1 pair of scissors
- 1 metallic ruler (20 or 30 cm, 0.5 mm graduation)
- 1 hot glue gun with hot melt glue sticks
- 1 cutter with spare blades
- 1 X-Acto knife
- 1 paper pencil and block of white paper
- 1 non-repositionable glue spray

Adobe Suite - 1st Year

A "Wacom Intuos" graphic tablet is provided free of charge by the school in exchange for a €70 deposit check.

It must be brought at the beginning of the school year.

Design History & Culture - All Levels

- 1 notebook or sketchbook
- Pencils and pens

Required Reading

- 1st Year : Alexandra Midal, Design, initiation à l'histoire d'une discipline, Pocket, Coll. Agora, 2009.
- 2nd Year : Victor Papanek, Design for the Real World, Human Ecology and Social Change, Thames and Hudson, 2019.

Further Reading (Optional)

- Raymond Guidot, Histoire du design de 1940 à nos jours, Hazan, 2004.
- Raymond Guidot, Histoire des objets, chronique du design industriel, Hazan, 2013.
- Stéphane Viale, Le design, collection : Que sais-je, Presses Universitaires de France, 2015.
- Victor Margolin, World History of Design (1 & 2), Bloomsbury Academic, 2017.

Language - English & French (All Students)

- 1 notebook or sketchbook
- Pencils and pens
- Paper

Students may purchase art supplies at Le Géant des Beaux-Arts, where BESIGN members benefit from special pricing.

Please note that additional materials may be required during the academic year depending on project needs.

Accommodation & banking



Students may choose private housing or student residence options.

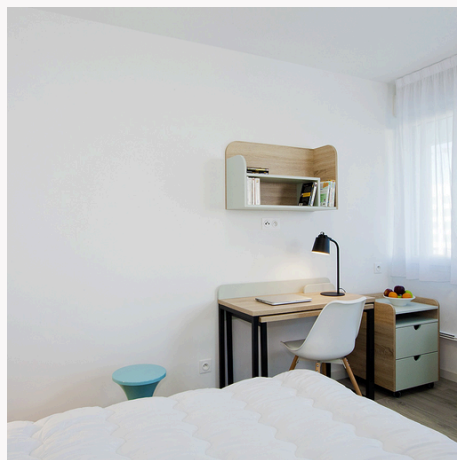
Recommended residence: Les Estudines (Nice Saint-Augustin).

Students who wish to be considered for accommodation at this residence are invited to contact Inken Krevet, Director of International Academic, at inken.krevet@besignschool.com.

Please note that this residence accepts parents as guarantors, even if they are not French residents.

Parents may therefore act as official guarantors where required.

BESIGN partners with the bank [BNP Paribas](#), located at 11 Place du Général de Gaulle, 06800 Cagnes-sur-Mer. The branch assists students with opening a French bank account, including fee-free accounts for international students without prior appointment. Student loans are available for eligible French students. A French bank account is mandatory for students receiving Crous or CAF financial support.



Additional options include:

- [Lokaviz](#)
- [Etuloge](#)
- [Studapart](#)

Students may apply for:

- [VISALE](#) (public guarantor system, eligibility required)
- [CAF](#) housing subsidies (if eligible)

Housing insurance is mandatory in France.



Insurance

Registration with the French public health insurance system (Sécurité Sociale) is mandatory and free of charge. It must be completed online at:

<https://etudiant-etranger.ameli.fr/#/>

A birth certificate in French is required.

As public insurance does not cover all medical costs, complementary health insurance is strongly recommended.

Our partner HEYME CARE (<https://heyme.care/fr>) offers suitable student plans. A 10% discount is available with the code SDA-10, applicable exclusively to health insurance products.

Civil liability insurance is mandatory and must be included in your coverage or subscribed separately.

Housing insurance is mandatory in France and may also be subscribed through HEYME Care.



Emergency numbers

- Medical Emergency (SAMU) : 15
- Police : 17
- Fire Department : 18
- European Emergency Number : 112
- Doctolib (<https://www.doctolib.fr/>): Online platform widely used in France to book medical appointments with doctors and healthcare professionals.



DOCUMENTS TO BRING ALONG

- Hardcopies and digital copies of your passport & visa
- Proof of insurance / travel insurance
- Photographs (hardcopy & e-photos)
- Banking information from your bank at home
- Phone numbers of embassy, your bank, your insurance
- Birth certificate in French

Student Visa Procedure

International students who require a visa to study in France must apply for a Long-Stay Student Visa (VLS-TS) before traveling.

The procedure may vary depending on your country of residence. It is therefore essential to verify whether your country is subject to the Campus France (“Études en France”) procedure.

Step 1 - Campus France / Études en France (EEF) Procedure

Students from countries subject to the Campus France procedure must complete the Études en France (EEF) process before applying for their visa.

Please note the following important information specific to BESIGN : BESIGN is listed among institutions without an EEF number. However, students are still required to create an account and complete their profile on the Études en France platform, as registration is mandatory for visa processing in concerned countries.

The EEF platform is generally used as an application portal (similar to a centralized admission system for international students outside Europe). This does not apply to BESIGN candidates, as you have already been admitted directly by the school.

When completing your EEF application, you must:


- Select “I have already been accepted”
- Search for our program under the category “Taught in English”
- Select “Mastère spécialisé” (even for Bachelor students)
- Choose:
 - “Mastère Design en Innovation Durable – Year 1” (for Bachelor 1 students)
 - “Mastère Design en Innovation Durable – Year 4” (for Master 1 students)

Once your EEF file is validated by Campus France, you will be authorized to proceed with your visa application through the official France-Visas platform.

Students whose country is not part of the Campus France procedure may apply directly via France-Visas.



Student Visa Procedure



Step 2 – Apply via France-Visas

All visa applications must be submitted online through the official website:

<https://france-visas.gouv.fr>

You will need to:

- Create an account
- Complete the online visa application form
- Upload supporting documents
- Pay the visa application fee
- Schedule an appointment at your local visa application center (TLS or VFS, depending on your country)

During the appointment, your biometric data (fingerprints and photo) will be collected.

Required Documents (General List)

Although requirements may vary by country, students are generally asked to provide:

- Valid passport
- Official letter of admission from BESIGN
- Proof of financial resources (minimum required by French authorities) 615€ / per month
- Proof of accommodation in France
- Health insurance coverage
- Passport photos
- Completed visa application form

It is strongly recommended to begin the procedure at least three months before your planned departure.

Step 3 – Upon Arrival in France

Students holding a Long-Stay Student Visa (VLS-TS) must validate their visa online within three months of arrival in France.

The validation process includes:

- Declaring your French address
- Paying the residence tax online

Failure to validate your visa may result in an irregular residence status.

Important

Visa processing times vary depending on the country and the time of year. Students are fully responsible for ensuring that all administrative procedures are completed on time.

If you have any questions regarding your visa procedure, please contact the International Office.



DESIGN THE SUSTAINABLE DESIGN SCHOOL

WWW.BESIGNSCHOOL.COM

1 CHEMIN DU VAL FLEURI
06800 CAGNES-SUR-MER

([HTTPS://MAPS.APP.GOO.GL/DQR6QNDKMFEEQG9H7](https://maps.app.goo.gl/DQR6QNDKMFEEQG9H7))

+33 4 93 97 11 59

CONTACT@BESIGNSCHOOL.COM

[INSTAGRAM](#) / [LINKEDIN](#) / [FACEBOOK](#) / [TIKTOK](#) / [YOUTUBE](#)

2026